



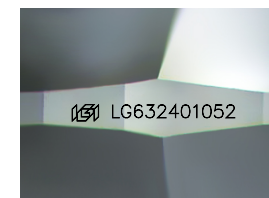
ELECTRONIC COPY

LG632401052
Report verification at igi.org



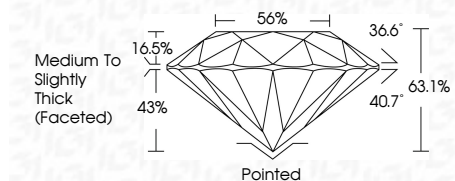
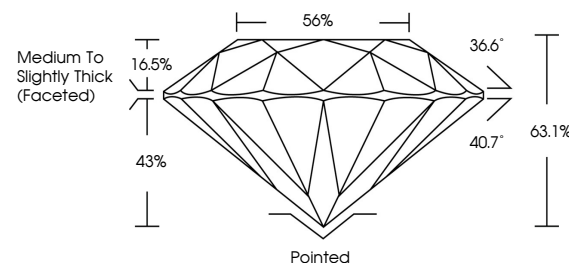
May 2, 2024
IGI Report Number **LG632401052**
Description **LABORATORY GROWN DIAMOND**
Shape and Cutting Style **ROUND BRILLIANT**
Measurements **9.06 - 9.14 X 5.74 MM**

GRADING RESULTS
Carat Weight **2.96 CARATS**
Color Grade **E**
Clarity Grade **SI 1**
Cut Grade **EXCELLENT**

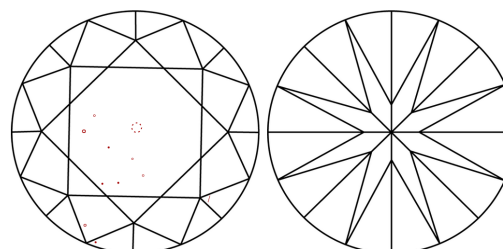


Sample Image Used

PROPORTIONS



CLARITY CHARACTERISTICS



KEY TO SYMBOLS

Red symbols indicate internal characteristics.
Green symbols indicate external characteristics.

COLOR

D E F G H I J Faint Very Light Light

CLARITY

FL	IF	VS ¹⁻²	VS ¹⁻²	SI ¹⁻²	I ¹⁻³
Flawless	Internally Flawless	Very Very Slightly Included	Very Slightly Included	Slightly Included	Included

ADDITIONAL GRADING INFORMATION

Polish **EXCELLENT**
Symmetry **EXCELLENT**
Fluorescence **NONE**
Inscription(s) **IGI LG632401052**
Comments: This Laboratory Grown Diamond was created by Chemical Vapor Deposition (CVD) growth process and may include post-growth treatment. Type IIa



May 2, 2024
IGI Report No LG632401052
ROUND BRILLIANT

2.96 CARATS
Carat Weight
Color Grade **E**
Clarity Grade **SI 1**
Depth **EXCELLENT**
Table **63.1%**
Girdle **56%**
Medium To Slightly Thick (Faceted)

Culet **Pointed**
Polish **EXCELLENT**
Symmetry **EXCELLENT**
Fluorescence **NONE**
Inscription(s) **IGI LG632401052**

Comments: This Laboratory Grown Diamond was created by Chemical Vapor Deposition (CVD) growth process and may include post-growth treatment. Type IIa