



ELECTRONIC COPY

LABORATORY GROWN DIAMOND REPORT

August 7, 2025
IGI Report Number LG727506129
Description LABORATORY GROWN DIAMOND
Shape and Cutting Style PRINCESS CUT
Measurements 5.64 X 5.63 X 4.03 MM

GRADING RESULTS

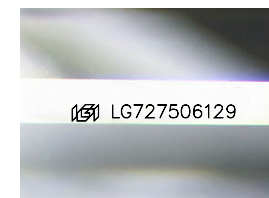
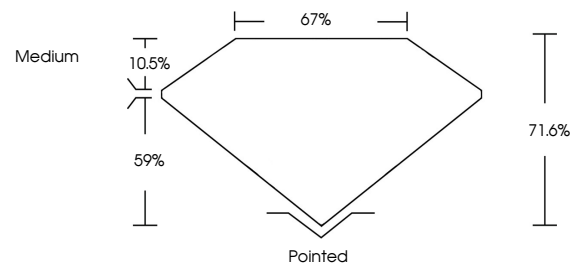
Carat Weight 1.09 CARAT
Color Grade D
Clarity Grade VS 1

ADDITIONAL GRADING INFORMATION

Polish EXCELLENT
Symmetry EXCELLENT
Fluorescence NONE
Inscription(s) IGI LG727506129

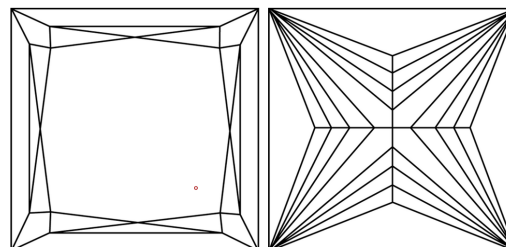
Comments: This Laboratory Grown Diamond was created by Chemical Vapor Deposition (CVD) growth process.
Type IIa

PROPORTIONS



Sample Image Used

CLARITY CHARACTERISTICS



KEY TO SYMBOLS

Red symbols indicate internal characteristics.
Green symbols indicate external characteristics.

COLOR

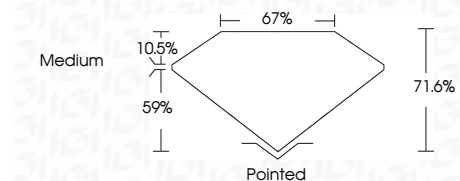
D E F G H I J Faint Very Light Light

CLARITY

IF WS¹⁻² VS¹⁻² SI¹⁻² I¹⁻³
Internally Flawless Very Very Slightly Included Very Slightly Included Slightly Included Included



August 7, 2025
IGI Report Number LG727506129
Description LABORATORY GROWN DIAMOND
Shape and Cutting Style PRINCESS CUT
Measurements 5.64 X 5.63 X 4.03 MM
GRADING RESULTS
Carat Weight 1.09 CARAT
Color Grade D
Clarity Grade VS 1



ADDITIONAL GRADING INFORMATION

Polish EXCELLENT
Symmetry EXCELLENT
Fluorescence NONE
Inscription(s) IGI LG727506129
Comments: This Laboratory Grown Diamond was created by Chemical Vapor Deposition (CVD) growth process.
Type IIa



August 7, 2025
IGI Report No LG727506129
PRINCESS CUT
1.09 CARAT D
5.64 X 5.63 X 4.03 MM
Carat Weight
Color Grade
Clarity Grade
Depth
Table
Girdle
Medium
Pointed
EXCELLENT
EXCELLENT
NONE
IGI LG727506129
Comments: This Laboratory Grown Diamond was created by Chemical Vapor Deposition (CVD) growth process.
Type IIa