



ELECTRONIC COPY

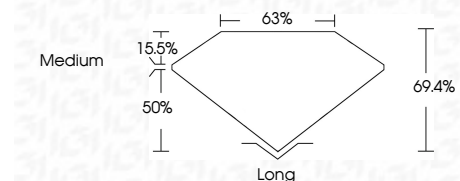
LG750521619
Report verification at igi.org



November 21, 2025
IGI Report Number **LG750521619**
Description **LABORATORY GROWN DIAMOND**
Shape and Cutting Style **EMERALD CUT**
Measurements **9.40 X 6.90 X 4.79 MM**

GRADING RESULTS

Carat Weight **3.03 CARATS**
Color Grade **G**
Clarity Grade **VS 1**



ADDITIONAL GRADING INFORMATION

Polish **EXCELLENT**
Symmetry **EXCELLENT**
Fluorescence **NONE**
Inscription(s) **IGI LG750521619**
Comments: This Laboratory Grown Diamond was created by Chemical Vapor Deposition (CVD) growth process. Type IIa



November 21, 2025
IGI Report No LG750521619
EMERALD CUT
3.03 CARATS
Color Grade **G**
Clarity Grade **VS 1**
Table **69.4%**
Depth **65%**
Girdle **Medium**
Culet **Long**
Polish **EXCELLENT**
Symmetry **EXCELLENT**
Fluorescence **NONE**
Inscription(s) **IGI LG750521619**
Comments: This Laboratory Grown Diamond was created by Chemical Vapor Deposition (CVD) growth process. Type IIa

LABORATORY GROWN DIAMOND REPORT

November 21, 2025
IGI Report Number **LG750521619**
Description **LABORATORY GROWN DIAMOND**
Shape and Cutting Style **EMERALD CUT**
Measurements **9.40 X 6.90 X 4.79 MM**

GRADING RESULTS

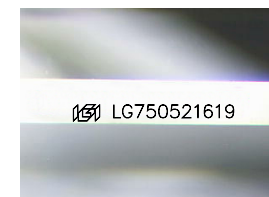
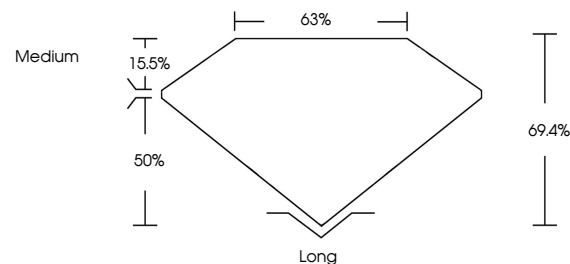
Carat Weight **3.03 CARATS**
Color Grade **G**
Clarity Grade **VS 1**

ADDITIONAL GRADING INFORMATION

Polish **EXCELLENT**
Symmetry **EXCELLENT**
Fluorescence **NONE**
Inscription(s) **IGI LG750521619**

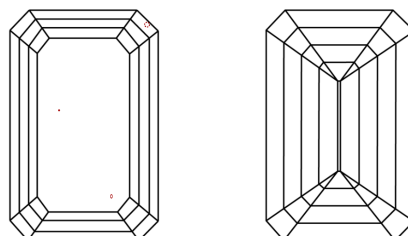
Comments: This Laboratory Grown Diamond was created by Chemical Vapor Deposition (CVD) growth process. Type IIa

PROPORTIONS



Sample Image Used

CLARITY CHARACTERISTICS



KEY TO SYMBOLS

Red symbols indicate internal characteristics.
Green symbols indicate external characteristics.

COLOR

D E F G H I J Faint Very Light Light

CLARITY

FL	IF	VS ¹⁻²	VS ¹⁻²	SI ¹⁻²	I ¹⁻³
Flawless	Internally Flawless	Very Very Slightly Included	Very Slightly Included	Slightly Included	Included

