



ELECTRONIC COPY

LABORATORY GROWN DIAMOND REPORT

December 22, 2025  
IGI Report Number LG758531093  
Description LABORATORY GROWN DIAMOND  
Shape and Cutting Style CUT CORNERED RECTANGULAR MODIFIED BRILLIANT  
Measurements 10.49 X 7.24 X 4.83 MM

GRADING RESULTS

Carat Weight 3.06 CARATS  
Color Grade F  
Clarity Grade VVS 2

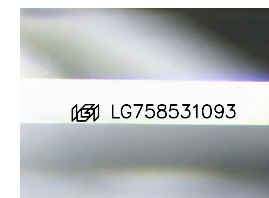
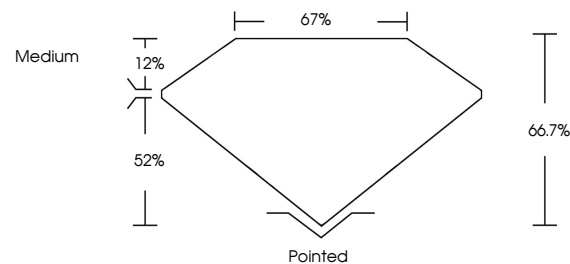
ADDITIONAL GRADING INFORMATION

Polish EXCELLENT  
Symmetry EXCELLENT  
Fluorescence NONE

Inscription(s) LG758531093

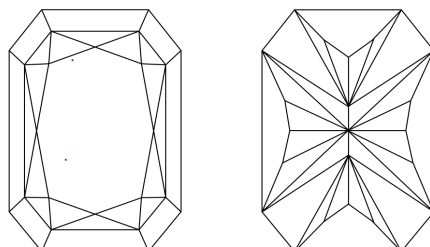
Comments: This Laboratory Grown Diamond was created by Chemical Vapor Deposition (CVD) growth process.  
Type IIa

PROPORTIONS



Sample Image Used

CLARITY CHARACTERISTICS



KEY TO SYMBOLS

Red symbols indicate internal characteristics.  
Green symbols indicate external characteristics.

COLOR

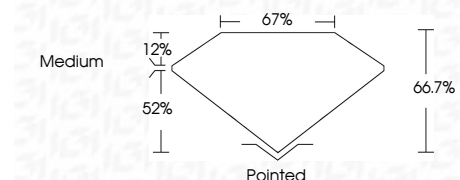
D E F G H I J Faint Very Light Light

CLARITY

FL IF VVS<sup>1-2</sup> VS<sup>1-2</sup> SI<sup>1-2</sup> I<sup>1-3</sup>  
Flawless Internally Flawless Very Very Slightly Included Very Slightly Included Slightly Included Included



December 22, 2025  
IGI Report Number LG758531093  
Description LABORATORY GROWN DIAMOND  
Shape and Cutting Style CUT CORNERED RECTANGULAR MODIFIED BRILLIANT  
Measurements 10.49 X 7.24 X 4.83 MM  
GRADING RESULTS  
Carat Weight 3.06 CARATS  
Color Grade F  
Clarity Grade VVS 2



ADDITIONAL GRADING INFORMATION

Polish EXCELLENT  
Symmetry EXCELLENT  
Fluorescence NONE  
Inscription(s) LG758531093  
Comments: This Laboratory Grown Diamond was created by Chemical Vapor Deposition (CVD) growth process.  
Type IIa



December 22, 2025  
IGI Report No. LG758531093  
CUT CORNERED RECT. MODIFIED BRILLIANT  
10.49 X 7.24 X 4.83 MM  
3.06 CARATS  
F  
VVS 2  
66.7%  
67%  
Medium  
Pointed  
EXCELLENT  
EXCELLENT  
NONE  
None  
None  
None  
 LG758531093  
Comments: This Laboratory Grown Diamond was created by Chemical Vapor Deposition (CVD) growth process.  
Type IIa