



ELECTRONIC COPY

LG760596047 Report verification at igi.org

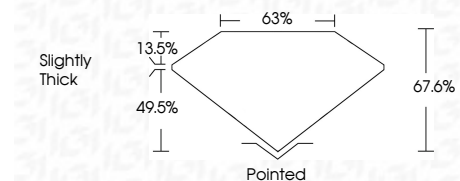


December 29, 2025 IGI Report Number LG760596047 Description LABORATORY GROWN DIAMOND Shape and Cutting Style CUT CORNERED RECTANGULAR MODIFIED BRILLIANT

Measurements 10.30 X 7.15 X 4.83 MM

GRADING RESULTS

Carat Weight 3.09 CARATS Color Grade G Clarity Grade VVS 2



ADDITIONAL GRADING INFORMATION

Polish EXCELLENT Symmetry EXCELLENT Fluorescence NONE Inscription(s) IGI LG760596047 Comments: This Laboratory Grown Diamond was created by Chemical Vapor Deposition (CVD) growth process. Type IIa



December 29, 2025 IGI Report No. LG760596047 CUT CORNERED RECT. MODIFIED BRILLIANT 10.30 X 7.15 X 4.83 MM 3.09 CARATS G VVS 2 67.6% 63% Slightly Thick Pointed EXCELLENT EXCELLENT NONE NONE IGI LG760596047 Comments: This Laboratory Grown Diamond was created by Chemical Vapor Deposition (CVD) growth process. Type IIa

LABORATORY GROWN DIAMOND REPORT

December 29, 2025 IGI Report Number LG760596047 Description LABORATORY GROWN DIAMOND Shape and Cutting Style CUT CORNERED RECTANGULAR MODIFIED BRILLIANT Measurements 10.30 X 7.15 X 4.83 MM

GRADING RESULTS

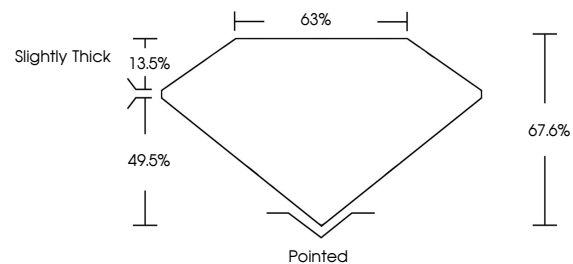
Carat Weight 3.09 CARATS Color Grade G Clarity Grade VVS 2

ADDITIONAL GRADING INFORMATION

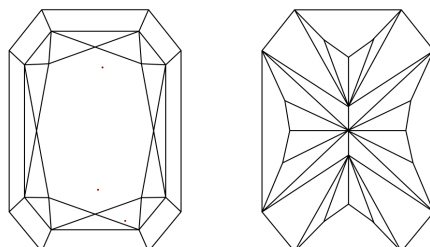
Polish EXCELLENT Symmetry EXCELLENT Fluorescence NONE Inscription(s) IGI LG760596047

Comments: This Laboratory Grown Diamond was created by Chemical Vapor Deposition (CVD) growth process. Type IIa

PROPORTIONS

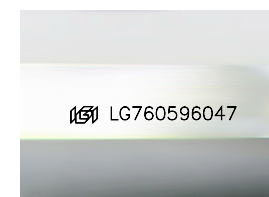


CLARITY CHARACTERISTICS



KEY TO SYMBOLS

Red symbols indicate internal characteristics. Green symbols indicate external characteristics.



Sample Image Used

COLOR

D E F G H I J Faint Very Light Light

CLARITY

FL IF VVS 1-2 VS 1-2 SI 1-2 I 1-3 Flawless Internally Flawless Very Very Slightly Included Very Slightly Included Slightly Included Included

