



**ELECTRONIC COPY**

LG767602139  
Report verification at igi.org



January 21, 2026

IGI Report Number **LG767602139**

Description **LABORATORY GROWN DIAMOND**

Shape and Cutting Style **ROUND BRILLIANT**

Measurements **8.22 - 8.28 X 5.01 MM**

**GRADING RESULTS**

Carat Weight **2.09 CARATS**

Color Grade **G**

Clarity Grade **VS 1**

Cut Grade **IDEAL**

January 21, 2026  
IGI Report Number **LG767602139**  
Description **LABORATORY GROWN DIAMOND**  
Shape and Cutting Style **ROUND BRILLIANT**  
Measurements **8.22 - 8.28 X 5.01 MM**

**GRADING RESULTS**

Carat Weight **2.09 CARATS**

Color Grade **G**

Clarity Grade **VS 1**

Cut Grade **IDEAL**

**ADDITIONAL GRADING INFORMATION**

Polish **EXCELLENT**

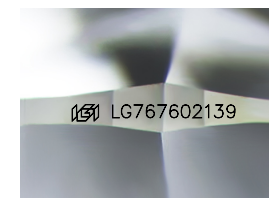
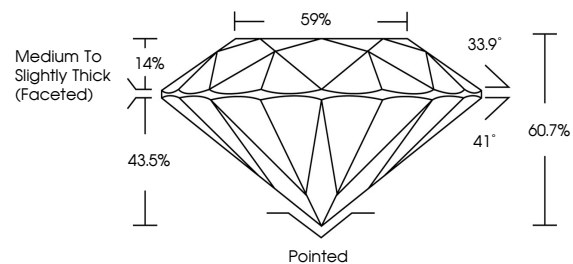
Symmetry **EXCELLENT**

Fluorescence **NONE**

Inscription(s) **IGI LG767602139**

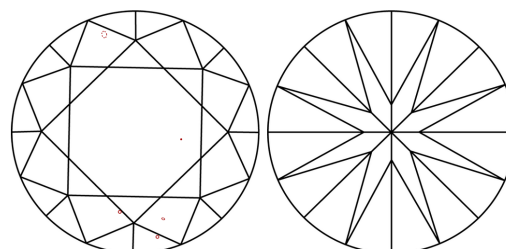
Comments: This Laboratory Grown Diamond was created by Chemical Vapor Deposition (CVD) growth process. Type IIa

**PROPORTIONS**



Sample Image Used

**CLARITY CHARACTERISTICS**



**KEY TO SYMBOLS**

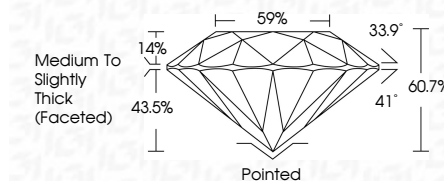
Red symbols indicate internal characteristics.  
Green symbols indicate external characteristics.

**COLOR**

D E F G H I J Faint Very Light Light

**CLARITY**

FL	IF	VS <sup>1-2</sup>	VS <sup>1-2</sup>	SI <sup>1-2</sup>	I <sup>1-3</sup>
Flawless	Internally Flawless	Very Very Slightly Included	Very Slightly Included	Slightly Included	Included



**ADDITIONAL GRADING INFORMATION**

Polish **EXCELLENT**

Symmetry **EXCELLENT**

Fluorescence **NONE**

Inscription(s) **IGI LG767602139**

Comments: This Laboratory Grown Diamond was created by Chemical Vapor Deposition (CVD) growth process. Type IIa



January 21, 2026  
IGI Report No LG767602139  
ROUND BRILLIANT

2.09 CARATS  
G

8.22 - 8.28 X 5.01 MM  
VS 1  
IDEAL  
60.7%  
59%  
Medium To Slightly Thick (Faceted)

Pointed  
EXCELLENT  
EXCELLENT  
NONE  
NONE  
IGI LG767602139

Comments: This Laboratory Grown Diamond was created by Chemical Vapor Deposition (CVD) growth process. Type IIa