



**ELECTRONIC COPY**

LG767610233  
Report verification at igi.org



January 21, 2026  
IGI Report Number **LG767610233**  
Description **LABORATORY GROWN DIAMOND**  
Shape and Cutting Style **MARQUISE BRILLIANT**  
Measurements **15.60 X 7.54 X 4.70 MM**

**GRADING RESULTS**  
Carat Weight **3.10 CARATS**  
Color Grade **E**  
Clarity Grade **VS 2**



**ADDITIONAL GRADING INFORMATION**  
Polish **EXCELLENT**  
Symmetry **EXCELLENT**  
Fluorescence **NONE**  
Inscription(s) **IGI LG767610233**  
Comments: This Laboratory Grown Diamond was created by Chemical Vapor Deposition (CVD) growth process. Type IIa



January 21, 2026  
IGI Report No LG767610233  
**MARQUISE BRILLIANT**  
15.60 X 7.54 X 4.70 MM  
3.10 CARATS  
E  
VS 2  
62.3%  
61%  
Medium to Slightly Thick (Faceted)  
Pointed  
EXCELLENT  
EXCELLENT  
NONE  
IGI LG767610233  
Comments: This Laboratory Grown Diamond was created by Chemical Vapor Deposition (CVD) growth process. Type IIa

**LABORATORY GROWN DIAMOND REPORT**

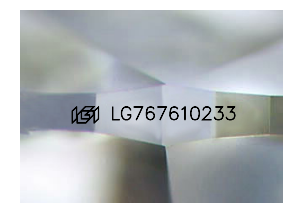
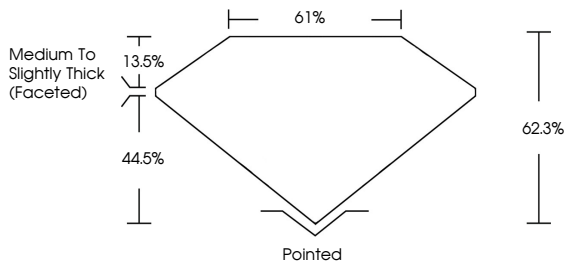
January 21, 2026  
IGI Report Number **LG767610233**  
Description **LABORATORY GROWN DIAMOND**  
Shape and Cutting Style **MARQUISE BRILLIANT**  
Measurements **15.60 X 7.54 X 4.70 MM**

**GRADING RESULTS**  
Carat Weight **3.10 CARATS**  
Color Grade **E**  
Clarity Grade **VS 2**

**ADDITIONAL GRADING INFORMATION**  
Polish **EXCELLENT**  
Symmetry **EXCELLENT**  
Fluorescence **NONE**  
Inscription(s) **IGI LG767610233**

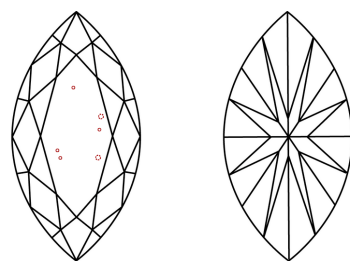
Comments: This Laboratory Grown Diamond was created by Chemical Vapor Deposition (CVD) growth process. Type IIa

**PROPORTIONS**



Sample Image Used

**CLARITY CHARACTERISTICS**



**KEY TO SYMBOLS**  
Red symbols indicate internal characteristics.  
Green symbols indicate external characteristics.

**COLOR**

D	E	F	G	H	I	J	Faint	Very Light	Light
---	---	---	---	---	---	---	-------	------------	-------

**CLARITY**

FL	IF	VS <sup>1-2</sup>	VS <sup>1-2</sup>	SI <sup>1-2</sup>	I <sup>1-3</sup>
Flawless	Internally Flawless	Very Very Slightly Included	Very Slightly Included	Slightly Included	Included

