



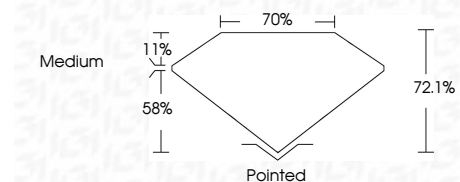
ELECTRONIC COPY

LG769610433
Report verification at igi.org



January 25, 2026
IGI Report Number **LG769610433**
Description **LABORATORY GROWN DIAMOND**
Shape and Cutting Style **PRINCESS CUT**
Measurements **6.89 X 6.75 X 4.87 MM**

GRADING RESULTS
Carat Weight **1.93 CARAT**
Color Grade **E**
Clarity Grade **VS 2**



ADDITIONAL GRADING INFORMATION
Polish **EXCELLENT**
Symmetry **EXCELLENT**
Fluorescence **NONE**
Inscription(s) **IGI LG769610433**
Comments: This Laboratory Grown Diamond was created by Chemical Vapor Deposition (CVD) growth process. Type IIa



January 25, 2026
IGI Report No LG769610433
PRINCESS CUT
6.89 X 6.75 X 4.87 MM
1.93 CARAT
E
VS 2
72.1%
70%
Medium
Pointed
EXCELLENT
EXCELLENT
NONE
IGI LG769610433
Comments: This Laboratory Grown Diamond was created by Chemical Vapor Deposition (CVD) growth process. Type IIa

LABORATORY GROWN DIAMOND REPORT

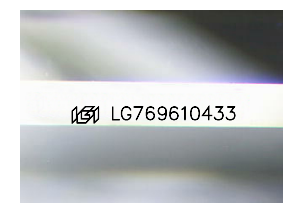
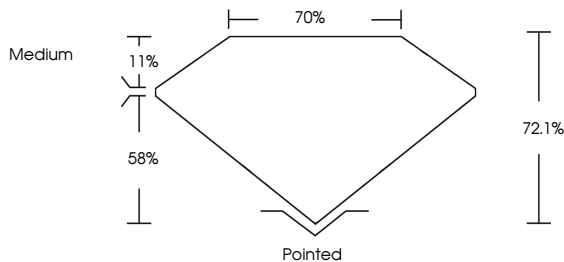
January 25, 2026
IGI Report Number **LG769610433**
Description **LABORATORY GROWN DIAMOND**
Shape and Cutting Style **PRINCESS CUT**
Measurements **6.89 X 6.75 X 4.87 MM**

GRADING RESULTS
Carat Weight **1.93 CARAT**
Color Grade **E**
Clarity Grade **VS 2**

ADDITIONAL GRADING INFORMATION
Polish **EXCELLENT**
Symmetry **EXCELLENT**
Fluorescence **NONE**
Inscription(s) **IGI LG769610433**

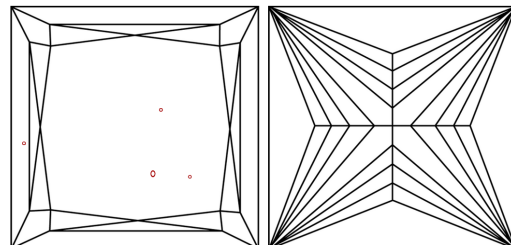
Comments: This Laboratory Grown Diamond was created by Chemical Vapor Deposition (CVD) growth process. Type IIa

PROPORTIONS



Sample Image Used

CLARITY CHARACTERISTICS



KEY TO SYMBOLS
Red symbols indicate internal characteristics.
Green symbols indicate external characteristics.

COLOR

D	E	F	G	H	I	J	Faint	Very Light	Light
---	---	---	---	---	---	---	-------	------------	-------

CLARITY

FL	IF	VS ¹⁻²	VS ¹⁻²	SI ¹⁻²	I ¹⁻³
Flawless	Internally Flawless	Very Very Slightly Included	Very Slightly Included	Slightly Included	Included

