



ELECTRONIC COPY

LG774612985
Report verification at igi.org

LABORATORY GROWN DIAMOND REPORT

February 17, 2026
IGI Report Number **LG774612985**
Description **LABORATORY GROWN DIAMOND**
Shape and Cutting Style **CUT CORNERED RECTANGULAR MODIFIED BRILLIANT**
Measurements **9.99 X 6.98 X 4.66 MM**

GRADING RESULTS

Carat Weight **2.83 CARATS**
Color Grade **G**
Clarity Grade **VS 1**

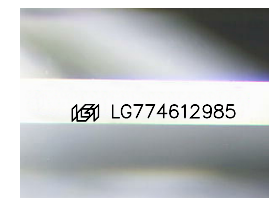
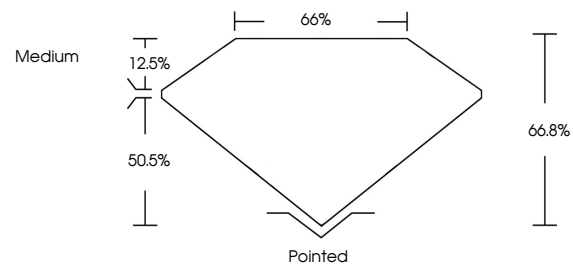
ADDITIONAL GRADING INFORMATION

Polish **EXCELLENT**
Symmetry **EXCELLENT**
Fluorescence **NONE**

Inscription(s) **IGI LG774612985**

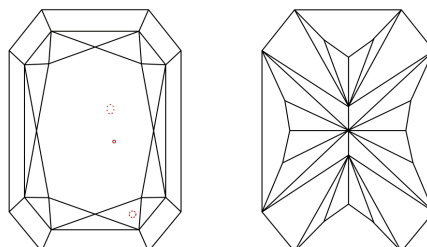
Comments: This Laboratory Grown Diamond was created by Chemical Vapor Deposition (CVD) growth process.
Type IIa

PROPORTIONS



Sample Image Used

CLARITY CHARACTERISTICS



KEY TO SYMBOLS

Red symbols indicate internal characteristics.
Green symbols indicate external characteristics.

COLOR

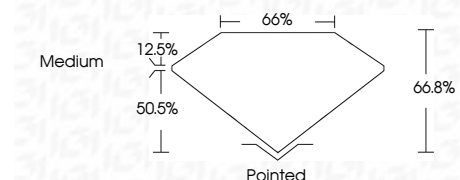
D E F G H I J Faint Very Light Light

CLARITY

FL	IF	VS ¹⁻²	VS ¹⁻²	SI ¹⁻²	I ¹⁻³
Flawless	Internally Flawless	Very Very Slightly Included	Very Slightly Included	Slightly Included	Included



February 17, 2026
IGI Report Number **LG774612985**
Description **LABORATORY GROWN DIAMOND**
Shape and Cutting Style **CUT CORNERED RECTANGULAR MODIFIED BRILLIANT**
Measurements **9.99 X 6.98 X 4.66 MM**
GRADING RESULTS
Carat Weight **2.83 CARATS**
Color Grade **G**
Clarity Grade **VS 1**



ADDITIONAL GRADING INFORMATION

Polish **EXCELLENT**
Symmetry **EXCELLENT**
Fluorescence **NONE**
Inscription(s) **IGI LG774612985**
Comments: This Laboratory Grown Diamond was created by Chemical Vapor Deposition (CVD) growth process.
Type IIa



IGI



February 17, 2026
IGI Report No LG774612985
CUT CORNERED RECT. MODIFIED BRILLIANT
9.99 X 6.98 X 4.66 MM
2.83 CARATS
G
VS 1
66.8%
50.5%
Medium
Pointed
EXCELLENT
EXCELLENT
NONE
IGI LG774612985

Comments: This Laboratory Grown Diamond was created by Chemical Vapor Deposition (CVD) growth process.
Type IIa