



**ELECTRONIC COPY**

LG795689346  
Report verification at igi.org



May 2, 2026

IGI Report Number **LG795689346**

Description **LABORATORY GROWN DIAMOND**

Shape and Cutting Style **PEAR BRILLIANT**

Measurements **8.99 X 5.69 X 3.44 MM**

**GRADING RESULTS**

Carat Weight **1.03 CARAT**

Color Grade **F**

Clarity Grade **VS 1**

May 2, 2026  
IGI Report Number **LG795689346**  
Description **LABORATORY GROWN DIAMOND**  
Shape and Cutting Style **PEAR BRILLIANT**  
Measurements **8.99 X 5.69 X 3.44 MM**

**GRADING RESULTS**

Carat Weight **1.03 CARAT**

Color Grade **F**

Clarity Grade **VS 1**

**ADDITIONAL GRADING INFORMATION**

Polish **EXCELLENT**

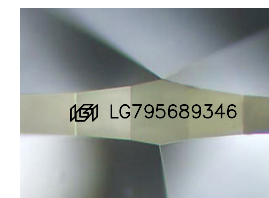
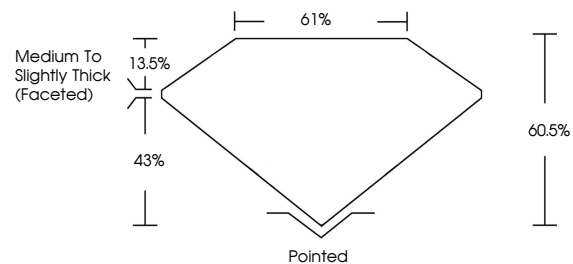
Symmetry **EXCELLENT**

Fluorescence **NONE**

Inscription(s) **LG795689346**

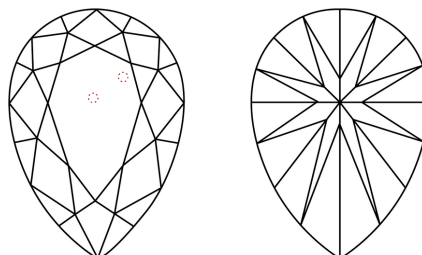
Comments: This Laboratory Grown Diamond was created by Chemical Vapor Deposition (CVD) growth process.  
Type IIa

**PROPORTIONS**



Sample Image Used

**CLARITY CHARACTERISTICS**



**KEY TO SYMBOLS**

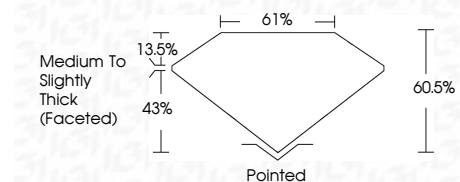
Red symbols indicate internal characteristics.  
Green symbols indicate external characteristics.

**COLOR**

D E F G H I J Faint Very Light Light

**CLARITY**

FL	IF	VS <sup>1-2</sup>	VS <sup>1-2</sup>	SI <sup>1-2</sup>	I <sup>1-3</sup>
Flawless	Internally Flawless	Very Very Slightly Included	Very Slightly Included	Slightly Included	Included



**ADDITIONAL GRADING INFORMATION**

Polish **EXCELLENT**

Symmetry **EXCELLENT**

Fluorescence **NONE**

Inscription(s) **LG795689346**

Comments: This Laboratory Grown Diamond was created by Chemical Vapor Deposition (CVD) growth process.  
Type IIa



**IGI**



May 2, 2026  
IGI Report No **LG795689346**  
**PEAR BRILLIANT**

**1.03 CARAT**  
F

**8.99 X 5.69 X 3.44 MM**

Carat Weight  
Color Grade  
Clarity Grade  
Table  
Girdle  
Culet  
Polish  
Symmetry  
Fluorescence  
Inscription(s)

**1.03 CARAT**  
**F**  
**8.99 X 5.69 X 3.44 MM**  
**VS 1**  
**60.5%**  
**61%**  
**Medium to Slightly Thick (Faceted)**  
**Pointed**  
**EXCELLENT**  
**EXCELLENT**  
**NONE**  
 **LG795689346**

Comments: This Laboratory Grown Diamond was created by Chemical Vapor Deposition (CVD) growth process.  
Type IIa