



ELECTRONIC COPY

LG797602404
Report verification at igi.org



May 1, 2026

IGI Report Number **LG797602404**

Description **LABORATORY GROWN DIAMOND**

Shape and Cutting Style **PEAR BRILLIANT**

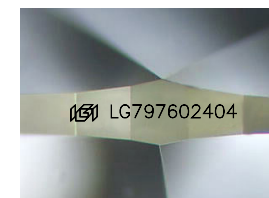
Measurements **8.50 X 5.63 X 3.50 MM**

GRADING RESULTS

Carat Weight **1.00 CARAT**

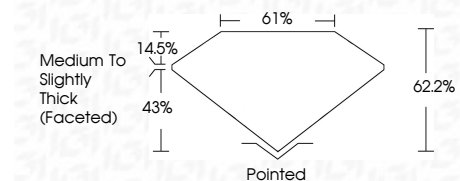
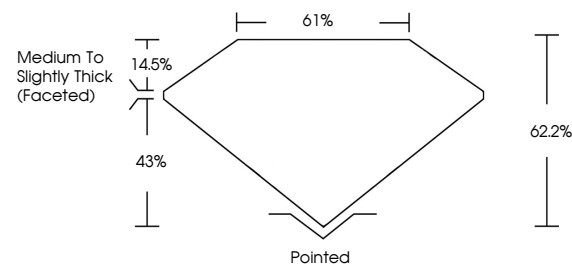
Color Grade **F**

Clarity Grade **VS 1**

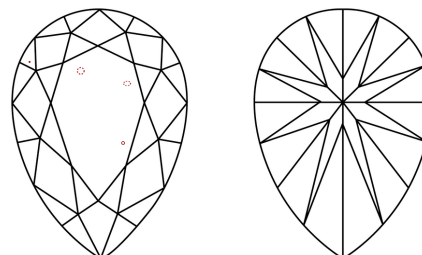


Sample Image Used

PROPORTIONS



CLARITY CHARACTERISTICS



KEY TO SYMBOLS

Red symbols indicate internal characteristics.
Green symbols indicate external characteristics.

COLOR

D E F G H I J Faint Very Light Light

CLARITY

FL	IF	VS ¹⁻²	VS ¹⁻²	SI ¹⁻²	I ¹⁻³
Flawless	Internally Flawless	Very Very Slightly Included	Very Slightly Included	Slightly Included	Included

ADDITIONAL GRADING INFORMATION

Polish **EXCELLENT**

Symmetry **EXCELLENT**

Fluorescence **NONE**

Inscription(s) **IGI LG797602404**

Comments: This Laboratory Grown Diamond was created by Chemical Vapor Deposition (CVD) growth process. Type IIa



IGI



May 1, 2026
IGI Report No LG797602404
PEAR BRILLIANT

8.50 X 5.63 X 3.50 MM
Carat Weight
Color Grade **F**
Clarity Grade **VS 1**
Depth **43%**
Table **14.5%**
Girdle **Medium to Slightly Thick (Faceted)**

1.00 CARAT
F
VS 1
62.2%
61%
Pointed
EXCELLENT
EXCELLENT
NONE
IGI LG797602404

Culet
Polish
Symmetry
Fluorescence
Inscription(s)

Comments: This Laboratory Grown Diamond was created by Chemical Vapor Deposition (CVD) growth process. Type IIa