



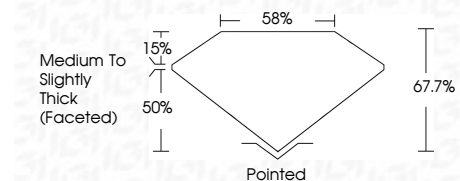
ELECTRONIC COPY

LG797618910
Report verification at igi.org



May 4, 2026
IGI Report Number LG797618910
Description LABORATORY GROWN DIAMOND
Shape and Cutting Style CUSHION MODIFIED BRILLIANT
Measurements 8.35 X 6.00 X 4.06 MM

GRADING RESULTS
Carat Weight 1.58 CARAT
Color Grade E
Clarity Grade VVS 2



ADDITIONAL GRADING INFORMATION
Polish EXCELLENT
Symmetry EXCELLENT
Fluorescence NONE
Inscription(s) IGI LG797618910
Comments: This Laboratory Grown Diamond was created by Chemical Vapor Deposition (CVD) growth process. Type IIa



May 4, 2026
IGI Report No LG797618910
CUSHION MODIFIED BRILLIANT
8.35 X 6.00 X 4.06 MM
1.58 CARAT E
VVS 2
67.7% 85%
Medium to Slightly Thick (Faceted)
Pointed
EXCELLENT
EXCELLENT
NONE
IGI LG797618910
Comments: This Laboratory Grown Diamond was created by Chemical Vapor Deposition (CVD) growth process. Type IIa

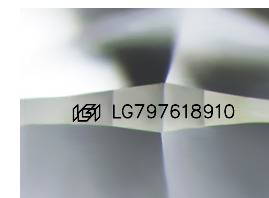
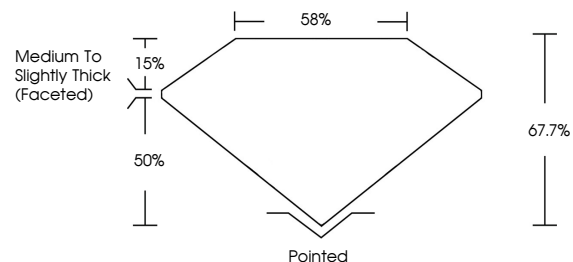
May 4, 2026
IGI Report Number LG797618910
Description LABORATORY GROWN DIAMOND
Shape and Cutting Style CUSHION MODIFIED BRILLIANT
Measurements 8.35 X 6.00 X 4.06 MM

GRADING RESULTS
Carat Weight 1.58 CARAT
Color Grade E
Clarity Grade VVS 2

ADDITIONAL GRADING INFORMATION
Polish EXCELLENT
Symmetry EXCELLENT
Fluorescence NONE
Inscription(s) IGI LG797618910

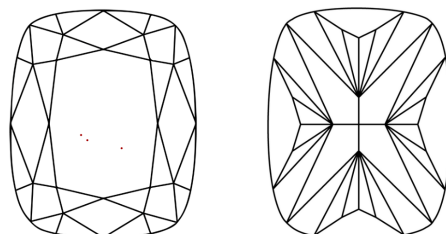
Comments: This Laboratory Grown Diamond was created by Chemical Vapor Deposition (CVD) growth process. Type IIa

PROPORTIONS



Sample Image Used

CLARITY CHARACTERISTICS



KEY TO SYMBOLS

Red symbols indicate internal characteristics.
Green symbols indicate external characteristics.

COLOR

D E F G H I J Faint Very Light Light

CLARITY

FL IF VVS 1-2 VS 1-2 SI 1-2 I 1-3
Flawless Internally Flawless Very Very Slightly Included Very Slightly Included Slightly Included Included

