



**ELECTRONIC COPY**

LG797623255  
Report verification at igi.org



May 1, 2026  
IGI Report Number **LG797623255**  
Description **LABORATORY GROWN DIAMOND**  
Shape and Cutting Style **CUSHION MODIFIED BRILLIANT**  
Measurements **7.95 X 6.00 X 4.03 MM**  
**GRADING RESULTS**  
Carat Weight **1.55 CARAT**  
Color Grade **E**  
Clarity Grade **VS 1**

May 1, 2026  
IGI Report Number **LG797623255**  
Description **LABORATORY GROWN DIAMOND**  
Shape and Cutting Style **CUSHION MODIFIED BRILLIANT**  
Measurements **7.95 X 6.00 X 4.03 MM**

**GRADING RESULTS**

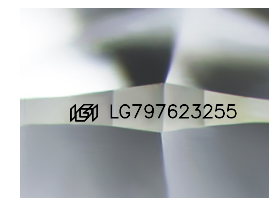
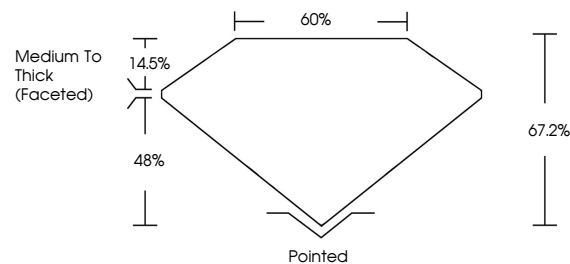
Carat Weight **1.55 CARAT**  
Color Grade **E**  
Clarity Grade **VS 1**

**ADDITIONAL GRADING INFORMATION**

Polish **EXCELLENT**  
Symmetry **EXCELLENT**  
Fluorescence **NONE**  
Inscription(s) **IGI LG797623255**

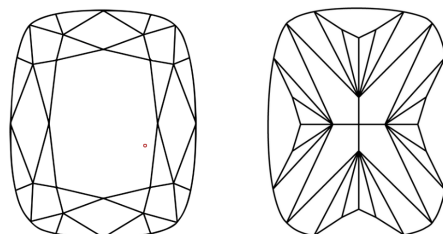
Comments: This Laboratory Grown Diamond was created by Chemical Vapor Deposition (CVD) growth process. Type IIa

**PROPORTIONS**



Sample Image Used

**CLARITY CHARACTERISTICS**



**KEY TO SYMBOLS**

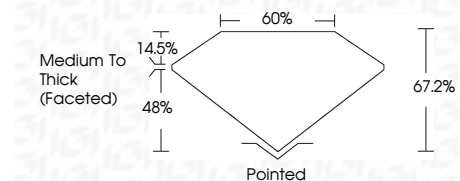
Red symbols indicate internal characteristics.  
Green symbols indicate external characteristics.

**COLOR**

D E F G H I J Faint Very Light Light

**CLARITY**

FL	IF	VS <sup>1-2</sup>	VS <sup>1-2</sup>	SI <sup>1-2</sup>	I <sup>1-3</sup>
Flawless	Internally Flawless	Very Very Slightly Included	Very Slightly Included	Slightly Included	Included



**ADDITIONAL GRADING INFORMATION**

Polish **EXCELLENT**  
Symmetry **EXCELLENT**  
Fluorescence **NONE**  
Inscription(s) **IGI LG797623255**  
Comments: This Laboratory Grown Diamond was created by Chemical Vapor Deposition (CVD) growth process. Type IIa



May 1, 2026  
IGI Report No. **LG797623255**  
**CUSHION MODIFIED BRILLIANT**  
7.95 X 6.00 X 4.03 MM  
1.55 CARAT  
E  
VS 1  
67.2%  
48%  
60%  
Medium To Thick (Faceted)  
Pointed  
EXCELLENT  
EXCELLENT  
NONE  
IGI LG797623255  
Comments: This Laboratory Grown Diamond was created by Chemical Vapor Deposition (CVD) growth process. Type IIa