



**ELECTRONIC COPY**

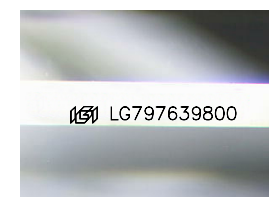
LG797639800  
Report verification at igi.org



May 4, 2026  
IGI Report Number **LG797639800**  
Description **LABORATORY GROWN DIAMOND**  
Shape and Cutting Style **EMERALD CUT**  
Measurements **9.15 X 6.56 X 4.44 MM**

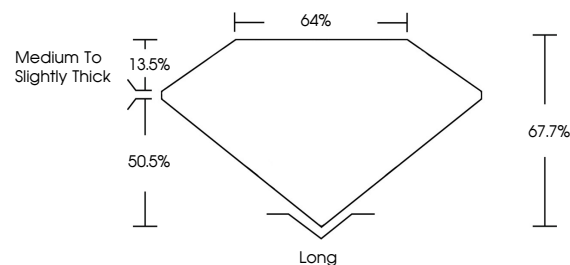
**GRADING RESULTS**

Carat Weight **2.59 CARATS**  
Color Grade **F**  
Clarity Grade **VS 1**

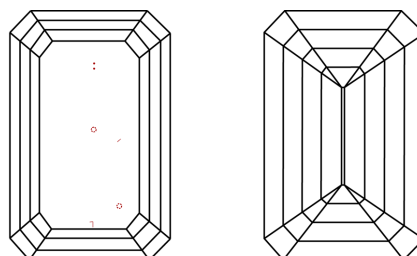


Sample Image Used

**PROPORTIONS**



**CLARITY CHARACTERISTICS**



**KEY TO SYMBOLS**

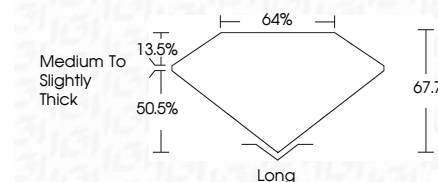
Red symbols indicate internal characteristics.  
Green symbols indicate external characteristics.

**COLOR**

D E F G H I J Faint Very Light Light

**CLARITY**

FL	IF	VS <sup>1-2</sup>	VS <sup>1-2</sup>	SI <sup>1-2</sup>	I <sup>1-3</sup>
Flawless	Internally Flawless	Very Very Slightly Included	Very Slightly Included	Slightly Included	Included



**ADDITIONAL GRADING INFORMATION**

Polish **EXCELLENT**  
Symmetry **EXCELLENT**  
Fluorescence **NONE**  
Inscription(s) **IGI LG797639800**  
Comments: This Laboratory Grown Diamond was created by Chemical Vapor Deposition (CVD) growth process. Type IIa



May 4, 2026  
IGI Report No LG797639800  
**EMERALD CUT**  
9.15 X 6.56 X 4.44 MM  
2.59 CARATS  
Color Grade **F**  
Clarity Grade **VS 1**  
Depth **67.7%**  
Table **64%**  
Girdle **Medium to Slightly Thick**  
Culet **Long**  
Polish **EXCELLENT**  
Symmetry **EXCELLENT**  
Fluorescence **NONE**  
Inscription(s) **IGI LG797639800**  
Comments: This Laboratory Grown Diamond was created by Chemical Vapor Deposition (CVD) growth process. Type IIa