



ELECTRONIC COPY

LG797686994
Report verification at igi.org



May 7, 2026
IGI Report Number **LG797686994**

Description **LABORATORY GROWN DIAMOND**

Shape and Cutting Style **CUT CORNERED
RECTANGULAR MODIFIED
BRILLIANT**

Measurements **7.20 X 5.08 X 3.36 MM**

GRADING RESULTS

Carat Weight **1.06 CARAT**

Color Grade **F**

Clarity Grade **VVS 2**

LABORATORY GROWN DIAMOND REPORT

May 7, 2026

IGI Report Number **LG797686994**

Description **LABORATORY GROWN DIAMOND**

Shape and Cutting Style **CUT CORNERED RECTANGULAR
MODIFIED BRILLIANT**

Measurements **7.20 X 5.08 X 3.36 MM**

GRADING RESULTS

Carat Weight **1.06 CARAT**

Color Grade **F**

Clarity Grade **VVS 2**

ADDITIONAL GRADING INFORMATION

Polish **EXCELLENT**

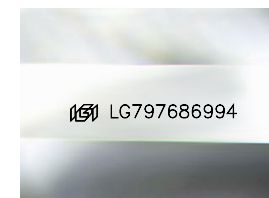
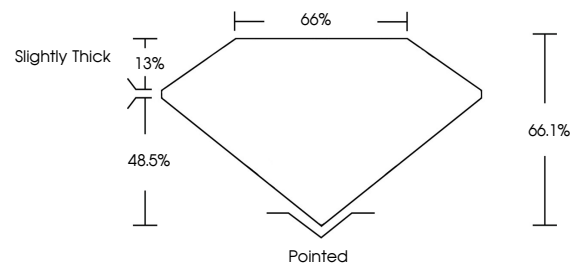
Symmetry **EXCELLENT**

Fluorescence **NONE**

Inscription(s) **IGI LG797686994**

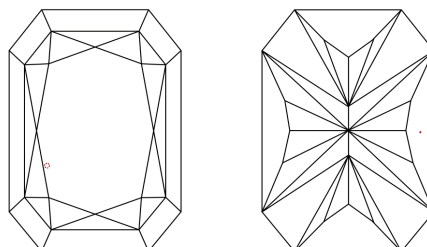
Comments: This Laboratory Grown Diamond was created by Chemical Vapor Deposition (CVD) growth process. Type IIa

PROPORTIONS



Sample Image Used

CLARITY CHARACTERISTICS



KEY TO SYMBOLS

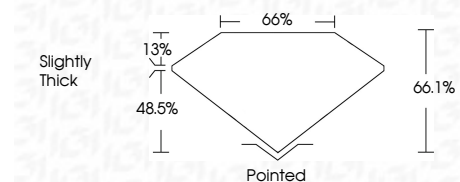
Red symbols indicate internal characteristics.
Green symbols indicate external characteristics.

COLOR

D E F G H I J Faint Very Light Light

CLARITY

FL	IF	VVS ¹⁻²	VS ¹⁻²	SI ¹⁻²	I ¹⁻³
Flawless	Internally Flawless	Very Very Slightly Included	Very Slightly Included	Slightly Included	Included



ADDITIONAL GRADING INFORMATION

Polish **EXCELLENT**

Symmetry **EXCELLENT**

Fluorescence **NONE**

Inscription(s) **IGI LG797686994**

Comments: This Laboratory Grown Diamond was created by Chemical Vapor Deposition (CVD) growth process. Type IIa



IGI



May 7, 2026
IGI Report No LG797686994
CUT CORNERED RECT. MODIFIED BRILLIANT
7.20 X 5.08 X 3.36 MM
Carat Weight 1.06 CARAT
Color Grade F
Clarity Grade VVS 2
Depth 48.5%
Table 13%
Girdle Slightly Thick
Culet Pointed
Polish EXCELLENT
Symmetry EXCELLENT
Fluorescence NONE
Inscription(s) IGI LG797686994
Comments: This Laboratory Grown Diamond was created by Chemical Vapor Deposition (CVD) growth process. Type IIa