



**ELECTRONIC COPY**

LG797687019  
Report verification at igi.org



May 6, 2026

IGI Report Number **LG797687019**

Description **LABORATORY GROWN DIAMOND**

Shape and Cutting Style **PRINCESS CUT**

Measurements **6.29 X 6.19 X 4.54 MM**

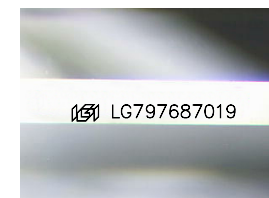
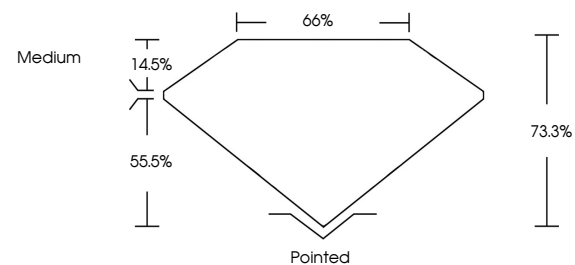
**GRADING RESULTS**

Carat Weight **1.57 CARAT**

Color Grade **F**

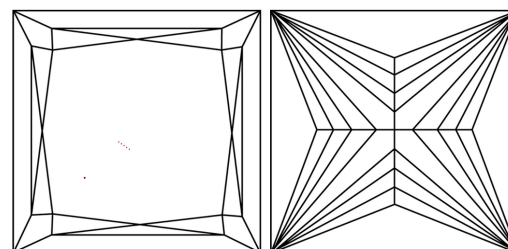
Clarity Grade **VVS 2**

**PROPORTIONS**



Sample Image Used

**CLARITY CHARACTERISTICS**



**KEY TO SYMBOLS**

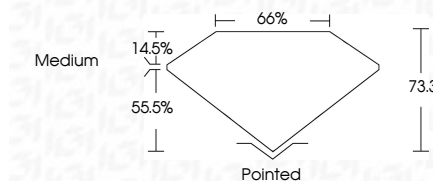
Red symbols indicate internal characteristics.  
Green symbols indicate external characteristics.

**COLOR**

D E F G H I J Faint Very Light Light

**CLARITY**

FL	IF	VVS <sup>1-2</sup>	VS <sup>1-2</sup>	SI <sup>1-2</sup>	I <sup>1-3</sup>
Flawless	Internally Flawless	Very Very Slightly Included	Very Slightly Included	Slightly Included	Included



**ADDITIONAL GRADING INFORMATION**

Polish **EXCELLENT**

Symmetry **EXCELLENT**

Fluorescence **NONE**

Inscription(s) **IGI LG797687019**

Comments: This Laboratory Grown Diamond was created by Chemical Vapor Deposition (CVD) growth process.  
Type IIa



**IGI**



May 6, 2026  
IGI Report No LG797687019  
**PRINCESS CUT**  
6.29 X 6.19 X 4.54 MM  
1.57 CARAT  
Color Grade **F**  
Clarity Grade **VVS 2**  
Depth **73.3%**  
Table **14.5%**  
Girdle **Medium**  
Culet **Pointed**  
Polish **EXCELLENT**  
Symmetry **EXCELLENT**  
Fluorescence **NONE**  
Inscription(s) **IGI LG797687019**  
Comments: This Laboratory Grown Diamond was created by Chemical Vapor Deposition (CVD) growth process.  
Type IIa