



**ELECTRONIC COPY**

LG798605457  
Report verification at igi.org



May 6, 2026  
IGI Report Number **LG798605457**  
Description **LABORATORY GROWN DIAMOND**  
Shape and Cutting Style **CUT CORNERED  
RECTANGULAR MODIFIED  
BRILLIANT**  
Measurements **10.22 X 7.16 X 4.83 MM**  
**GRADING RESULTS**  
Carat Weight **3.08 CARATS**  
Color Grade **G**  
Clarity Grade **VS 1**

May 6, 2026  
IGI Report Number **LG798605457**  
Description **LABORATORY GROWN DIAMOND**  
Shape and Cutting Style **CUT CORNERED RECTANGULAR  
MODIFIED BRILLIANT**  
Measurements **10.22 X 7.16 X 4.83 MM**

**GRADING RESULTS**

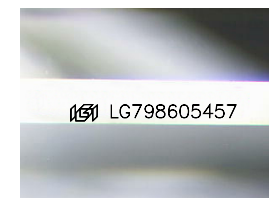
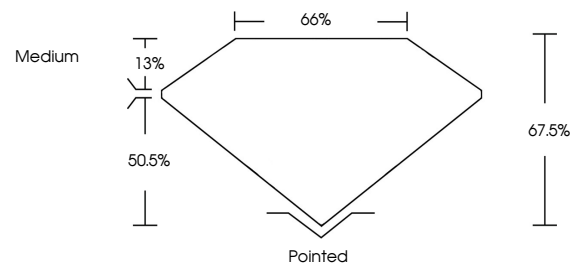
Carat Weight **3.08 CARATS**  
Color Grade **G**  
Clarity Grade **VS 1**

**ADDITIONAL GRADING INFORMATION**

Polish **EXCELLENT**  
Symmetry **EXCELLENT**  
Fluorescence **NONE**  
Inscription(s) **IGI LG798605457**

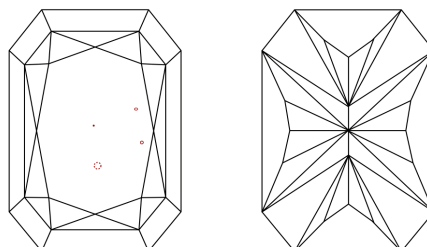
Comments: This Laboratory Grown Diamond was created by Chemical Vapor Deposition (CVD) growth process. Type IIa

**PROPORTIONS**



Sample Image Used

**CLARITY CHARACTERISTICS**



**KEY TO SYMBOLS**

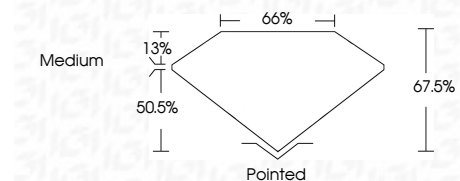
Red symbols indicate internal characteristics.  
Green symbols indicate external characteristics.

**COLOR**

D E F G H I J Faint Very Light Light

**CLARITY**

FL	IF	VS <sup>1-2</sup>	VS <sup>1-2</sup>	SI <sup>1-2</sup>	I <sup>1-3</sup>
Flawless	Internally Flawless	Very Very Slightly Included	Very Slightly Included	Slightly Included	Included



**ADDITIONAL GRADING INFORMATION**

Polish **EXCELLENT**  
Symmetry **EXCELLENT**  
Fluorescence **NONE**  
Inscription(s) **IGI LG798605457**  
Comments: This Laboratory Grown Diamond was created by Chemical Vapor Deposition (CVD) growth process. Type IIa



May 6, 2026  
IGI Report No LG798605457  
CUT CORNERED RECT. MODIFIED BRILLIANT  
10.22 X 7.16 X 4.83 MM  
Carat Weight 3.08 CARATS  
Color Grade G  
Clarity Grade VS 1  
Depth 50.5%  
Table 13%  
Girdle Medium  
Culet Pointed  
Polish EXCELLENT  
Symmetry EXCELLENT  
Fluorescence NONE  
Inscription(s) IGI LG798605457  
Comments: This Laboratory Grown Diamond was created by Chemical Vapor Deposition (CVD) growth process. Type IIa