



ELECTRONIC COPY

LG798621499
Report verification at igi.org

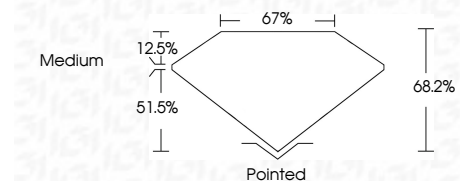


May 7, 2026
IGI Report Number **LG798621499**
Description **LABORATORY GROWN DIAMOND**

Shape and Cutting Style **CUT CORNERED
RECTANGULAR MODIFIED
BRILLIANT**

Measurements **9.01 X 6.16 X 4.20 MM**

GRADING RESULTS
Carat Weight **2.05 CARATS**
Color Grade **G**
Clarity Grade **VVS 2**



ADDITIONAL GRADING INFORMATION
Polish **EXCELLENT**
Symmetry **EXCELLENT**
Fluorescence **NONE**
Inscription(s) **(IGI) LG798621499**
Comments: This Laboratory Grown Diamond was created by Chemical Vapor Deposition (CVD) growth process. Type IIa



May 7, 2026
IGI Report No LG798621499
CUT CORNERED RECT. MODIFIED BRILLIANT
9.01 X 6.16 X 4.20 MM
2.05 CARATS
G
VVS 2
68.2%
51.5%
12.5%
Medium
Pointed
EXCELLENT
EXCELLENT
NONE
(IGI) LG798621499
Comments: This Laboratory Grown Diamond was created by Chemical Vapor Deposition (CVD) growth process. Type IIa

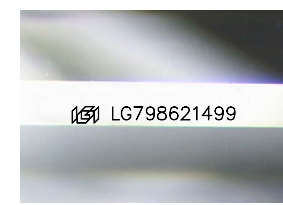
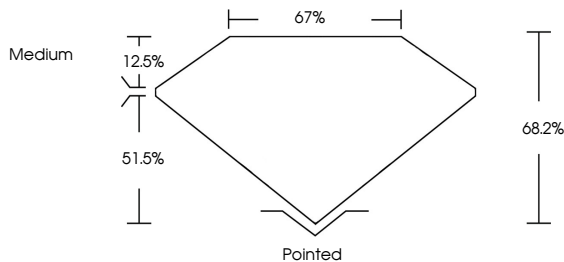
May 7, 2026
IGI Report Number **LG798621499**
Description **LABORATORY GROWN DIAMOND**
Shape and Cutting Style **CUT CORNERED RECTANGULAR
MODIFIED BRILLIANT**
Measurements **9.01 X 6.16 X 4.20 MM**

GRADING RESULTS
Carat Weight **2.05 CARATS**
Color Grade **G**
Clarity Grade **VVS 2**

ADDITIONAL GRADING INFORMATION
Polish **EXCELLENT**
Symmetry **EXCELLENT**
Fluorescence **NONE**
Inscription(s) **(IGI) LG798621499**

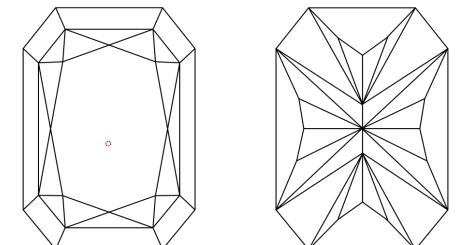
Comments: This Laboratory Grown Diamond was created by Chemical Vapor Deposition (CVD) growth process. Type IIa

PROPORTIONS



Sample Image Used

CLARITY CHARACTERISTICS



KEY TO SYMBOLS
Red symbols indicate internal characteristics.
Green symbols indicate external characteristics.

COLOR

D	E	F	G	H	I	J	Faint	Very Light	Light
---	---	---	---	---	---	---	-------	------------	-------

CLARITY

FL	IF	VVS ¹⁻²	VS ¹⁻²	SI ¹⁻²	I ¹⁻³
Flawless	Internally Flawless	Very Very Slightly Included	Very Slightly Included	Slightly Included	Included

