



ELECTRONIC COPY

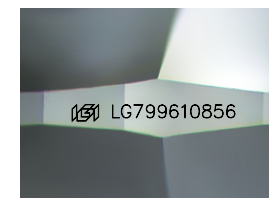
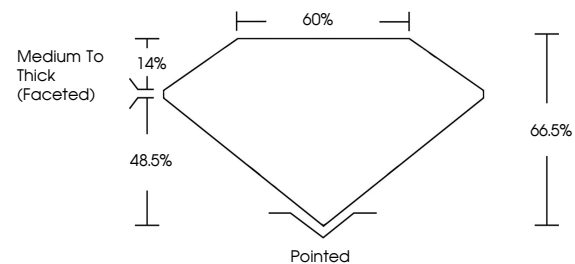
LG799610856
Report verification at igi.org



May 11, 2026
IGI Report Number **LG799610856**
Description **LABORATORY GROWN DIAMOND**
Shape and Cutting Style **CUSHION MODIFIED BRILLIANT**
Measurements **9.60 X 6.96 X 4.63 MM**
GRADING RESULTS
Carat Weight **2.52 CARATS**
Color Grade **G**
Clarity Grade **VS 2**

May 11, 2026
IGI Report Number **LG799610856**
Description **LABORATORY GROWN DIAMOND**
Shape and Cutting Style **CUSHION MODIFIED BRILLIANT**
Measurements **9.60 X 6.96 X 4.63 MM**

PROPORTIONS

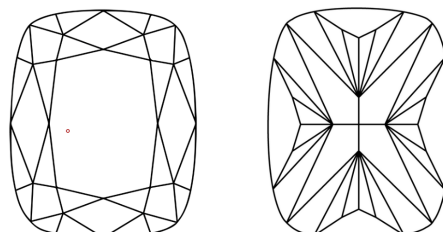


Sample Image Used

GRADING RESULTS

Carat Weight **2.52 CARATS**
Color Grade **G**
Clarity Grade **VS 2**

CLARITY CHARACTERISTICS



KEY TO SYMBOLS

Red symbols indicate internal characteristics.
Green symbols indicate external characteristics.

ADDITIONAL GRADING INFORMATION

Polish **EXCELLENT**
Symmetry **EXCELLENT**
Fluorescence **NONE**
Inscription(s) **IGI LG799610856**

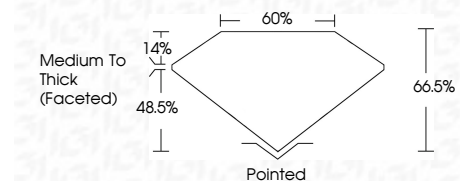
Comments: This Laboratory Grown Diamond was created by Chemical Vapor Deposition (CVD) growth process. Type IIa

COLOR

D E F G H I J Faint Very Light Light

CLARITY

FL	IF	VS ¹⁻²	VS ¹⁻²	SI ¹⁻²	I ¹⁻³
Flawless	Internally Flawless	Very Very Slightly Included	Very Slightly Included	Slightly Included	Included



ADDITIONAL GRADING INFORMATION

Polish **EXCELLENT**
Symmetry **EXCELLENT**
Fluorescence **NONE**
Inscription(s) **IGI LG799610856**
Comments: This Laboratory Grown Diamond was created by Chemical Vapor Deposition (CVD) growth process. Type IIa



May 11, 2026
IGI Report No LG799610856
CUSHION MODIFIED BRILLIANT
9.60 X 6.96 X 4.63 MM
Carat Weight **2.52 CARATS**
Color Grade **G**
Clarity Grade **VS 2**
Depth **66.05%**
Table **60%**
Girdle **Medium To Thick (Faceted)**
Culet **Pointed**
Polish **EXCELLENT**
Symmetry **EXCELLENT**
Fluorescence **NONE**
Inscription(s) **IGI LG799610856**

Comments: This Laboratory Grown Diamond was created by Chemical Vapor Deposition (CVD) growth process. Type IIa