



**ELECTRONIC COPY**

LG799690207  
Report verification at igi.org



May 11, 2026

IGI Report Number **LG799690207**

Description **LABORATORY GROWN DIAMOND**

Shape and Cutting Style **EMERALD CUT**

Measurements **9.58 X 7.08 X 4.74 MM**

**GRADING RESULTS**

Carat Weight **3.09 CARATS**

Color Grade **G**

Clarity Grade **VVS 2**

May 11, 2026  
IGI Report Number **LG799690207**  
Description **LABORATORY GROWN DIAMOND**  
Shape and Cutting Style **EMERALD CUT**  
Measurements **9.58 X 7.08 X 4.74 MM**

**GRADING RESULTS**

Carat Weight **3.09 CARATS**

Color Grade **G**

Clarity Grade **VVS 2**

**ADDITIONAL GRADING INFORMATION**

Polish **EXCELLENT**

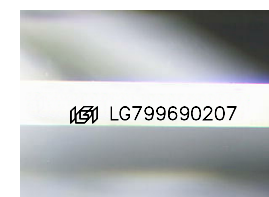
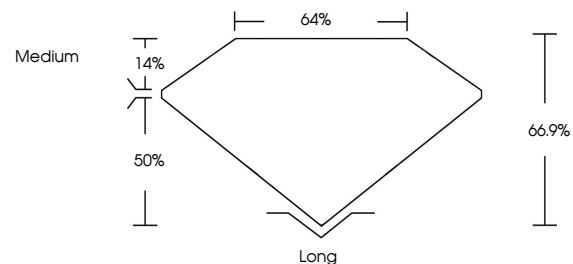
Symmetry **EXCELLENT**

Fluorescence **NONE**

Inscription(s) **IGI LG799690207**

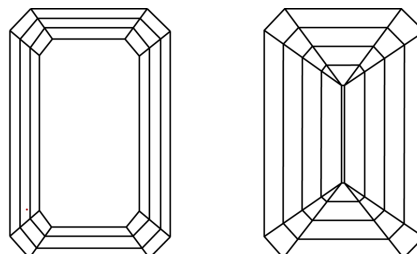
Comments: This Laboratory Grown Diamond was created by Chemical Vapor Deposition (CVD) growth process.  
Type IIa

**PROPORTIONS**



Sample Image Used

**CLARITY CHARACTERISTICS**



**KEY TO SYMBOLS**

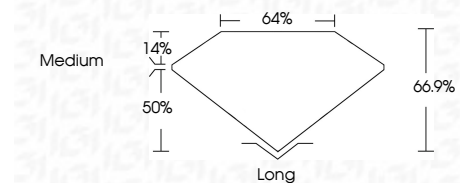
Red symbols indicate internal characteristics.  
Green symbols indicate external characteristics.

**COLOR**

D E F G H I J Faint Very Light Light

**CLARITY**

FL	IF	VVS <sup>1-2</sup>	VS <sup>1-2</sup>	SI <sup>1-2</sup>	I <sup>1-3</sup>
Flawless	Internally Flawless	Very Very Slightly Included	Very Slightly Included	Slightly Included	Included



**ADDITIONAL GRADING INFORMATION**

Polish **EXCELLENT**

Symmetry **EXCELLENT**

Fluorescence **NONE**

Inscription(s) **IGI LG799690207**

Comments: This Laboratory Grown Diamond was created by Chemical Vapor Deposition (CVD) growth process.  
Type IIa



**IGI**



May 11, 2026  
IGI Report No LG799690207  
EMERALD CUT  
3.09 CARATS  
G  
9.58 X 7.08 X 4.74 MM  
Color Grade  
VVS 2  
66.9%  
50%  
64%  
Medium  
Long  
EXCELLENT  
EXCELLENT  
NONE  
IGI LG799690207  
Comments: This Laboratory Grown Diamond was created by Chemical Vapor Deposition (CVD) growth process.  
Type IIa