



ELECTRONIC COPY

LG800645502
Report verification at igi.org



May 13, 2026

IGI Report Number **LG800645502**

Description **LABORATORY GROWN DIAMOND**

Shape and Cutting Style **ROUND BRILLIANT**

Measurements **6.45 - 6.48 X 3.96 MM**

GRADING RESULTS

Carat Weight **1.00 CARAT**

Color Grade **E**

Clarity Grade **VVS 2**

Cut Grade **IDEAL**

May 13, 2026

IGI Report Number **LG800645502**

Description **LABORATORY GROWN DIAMOND**

Shape and Cutting Style **ROUND BRILLIANT**

Measurements **6.45 - 6.48 X 3.96 MM**

GRADING RESULTS

Carat Weight **1.00 CARAT**

Color Grade **E**

Clarity Grade **VVS 2**

Cut Grade **IDEAL**

ADDITIONAL GRADING INFORMATION

Polish **EXCELLENT**

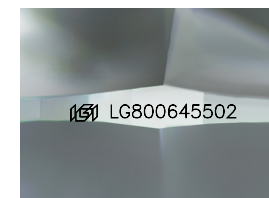
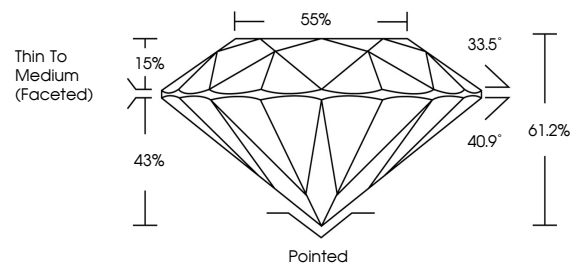
Symmetry **EXCELLENT**

Fluorescence **NONE**

Inscription(s) **IGI LG800645502**

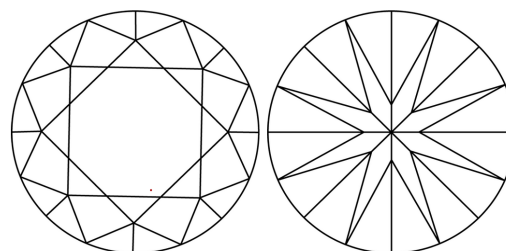
Comments: This Laboratory Grown Diamond was created by Chemical Vapor Deposition (CVD) growth process.
Type IIa

PROPORTIONS



Sample Image Used

CLARITY CHARACTERISTICS



KEY TO SYMBOLS

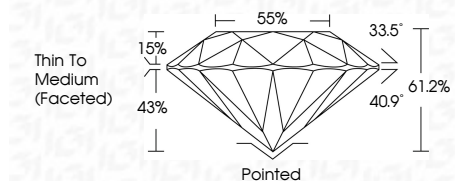
Red symbols indicate internal characteristics.
Green symbols indicate external characteristics.

COLOR

D E F G H I J Faint Very Light Light

CLARITY

| FL | IF | VVS ¹⁻² | VS ¹⁻² | SI ¹⁻² | I ¹⁻³ |
|----------|---------------------|-----------------------------|------------------------|-------------------|------------------|
| Flawless | Internally Flawless | Very Very Slightly Included | Very Slightly Included | Slightly Included | Included |



ADDITIONAL GRADING INFORMATION

Polish **EXCELLENT**

Symmetry **EXCELLENT**

Fluorescence **NONE**

Inscription(s) **IGI LG800645502**

Comments: This Laboratory Grown Diamond was created by Chemical Vapor Deposition (CVD) growth process.
Type IIa



IGI



| | | | | | | | | | | | |
|---------------------------|-----------------------|-------------|---------------|-----------|-------|-------|--------------------------|-----------|-----------|--------------|-----------------|
| May 13, 2026 | 1.00 CARAT | E | VVS 2 | IDEAL | 61.2% | 85% | Pointed | EXCELLENT | EXCELLENT | NONE | IGI LG800645502 |
| IGI Report No LG800645502 | Carat Weight | Color Grade | Clarity Grade | Cut Grade | Depth | Table | Thin To Medium (Faceted) | Polish | Symmetry | Fluorescence | Inscription(s) |
| ROUND BRILLIANT | 6.45 - 6.48 X 3.96 MM | E | VVS 2 | IDEAL | 61.2% | 85% | Pointed | EXCELLENT | EXCELLENT | NONE | IGI LG800645502 |

Comments: This Laboratory Grown Diamond was created by Chemical Vapor Deposition (CVD) growth process.
Type IIa